



18th Annual Southern Chesapeake Leukemia Cup Regatta July 8-10, 2016

The Leukemia & Lymphoma Society and Fishing Bay Yacht Club are co-organizing authorities for this regatta. Fishing Bay Yacht Club is the Host Club, and racing will be conducted in the Piankatank River and Chesapeake Bay at the mouth of the Piankatank River.

EAST COURSE SAILING INSTRUCTIONS

1 RULES

- 1.1 The regatta will be governed by the rules as defined in *The Racing Rules of Sailing*.
- 1.2 The U.S. Sailing Prescriptions to RRS 60, 63.2, and 63.4 shall not apply.

2 NOTICES TO COMPETITORS

Notices to competitors will be posted on the official notice board(s) located at the Deltaville Maritime Museum, and may also be available on the Yacht Scoring site (www.yachtscoring.com).

3 CHANGES TO SAILING INSTRUCTIONS

- 3.1 Any change to the sailing instructions will be posted before 0800 on the day it will take effect, except that any change to the schedule of races will be posted by 2000 on the day before it will take effect.
- 3.2 The Race Committee may make changes to the sailing instructions on the water by displaying Code Flag "L" and announcing such changes on VHF channel 72.

4 SIGNALS MADE ASHORE

- 4.1 Signals made ashore will be displayed from the mast at the Deltaville Maritime Museum.
- 4.2 When flag AP is displayed ashore, '1 minute' is replaced with 'not less than 60 minutes' after flag AP is lowered ashore with one sound signal. This changes race signal AP.
- 4.3 When a change to the sailing instructions is posted, Code Flag "L" will be displayed at Maritime Museum.

Captain Sponsor



First Mate Sponsors



5 SCHEDULE OF RACES

- 5.1 The scheduled time of the warning signal for the first race on Saturday is 1100.
- 5.2 The schedule time of the warning signal for the first race on Sunday is 1000.
- 5.3 If the Race Committee intends to start another race on the same day it will display the second substitute (with no sound) while boats are finishing. Two races or more will be run each day (time and weather permitting).
- 5.4 On Sunday, no warning signal will be made after 1500.

6 CLASS FLAGS

Class flags will be:

<i>Class</i>	<i>Flag</i>
PHRF A	9
PHRF B	6
PHRF C	7
PHRF NS	5
One-Design	Class Flag

7 RACING AREAS

Attachment 1 shows the location of racing areas.

8 THE COURSES

- 8.1 The diagrams in Attachment 2 show the courses, including the approximate angles between legs, the order in which marks are to be passed, and the side on which each mark is to be left.
- 8.2 No later than the warning signal, the race committee signal boat will display the approximate compass bearing of the first leg.

9 MARKS

- 9.1 Marks will be orange inflatables.
- 9.2 New marks, as provided in instruction 12.1, will be yellow inflatables.
- 9.3 The starting and finishing marks will be orange inflatables.

Captain Sponsor



First Mate Sponsors



10 CHECK IN

- 10.1** Each boat shall sail by the race committee signal boat, hail her sail number and be acknowledged by the race committee. This shall be done before a boat starts the first race in which she competes each day.

11 THE START

- 11.1** Races will be started by using rule 26.
- 11.2** An Attention Signal consisting of a series of short sounds may be made approximately five minutes before the Warning Signal for each race. This is not a timed signal.
- 11.3** See 12.2 in the event of a significant wind shift between fleet starts.
- 11.4** The starting line will be between a staff or halyard displaying an orange flag on the race committee signal boat and the course side of the pin end mark.
- 11.5** An orange Limit Buoy may be tethered to the stern of the RC Signal Boat.
- 11.6** Boats whose warning signal has not been made shall avoid the starting area. The Starting Area is defined as the area extending 100 yards beyond each end of the starting line and 150 yards behind the line and its extensions.
- 11.7** A boat starting later than 5 minutes after her starting signal will be scored Did Not Start. This changes rule A4.
- 11.8** The race committee intends to announce boats identified as OCS on VHF radio. East Course will broadcast on VHF 72. Failure to transmit information, receive such notification, or the order in which recalled boats are broadcast will not be grounds for redress. This changes RRS 62.

12 CHANGE OF THE NEXT LEG OF THE COURSE

- 12.1** To change the next leg of the course, the race committee will lay a new yellow mark (or move the finishing line) and remove the original mark as soon as practicable. When in a subsequent change a new mark is replaced, it will be replaced by an original mark.
- 12.2** If there is a significant wind shift before a preparatory signal, the race committee may signal a change of course for classes/fleets not yet started. In such case, at the preparatory signal, flag "C" will be displayed on the signal boat with repetitive sound signals and will remain displayed until the preparatory signal is lowered. The first mark will be the new/change mark. The bearing to the mark will be posted and announced over the designated VHF channel. In subsequent fleets the first mark will be the same new/change mark and shall not have the flag "C" signal, unless there is another, subsequent change to another new/change mark.

Captain Sponsor

First Mate Sponsors



13 THE FINISH

13.1 The finishing line will be between a staff displaying an orange flag on the race committee boat at the starboard end and the course side of the port-end finishing mark. For courses “2”, “4”, and “6”, the finishing mark will be placed on the side of the RC Boat opposite that of the starting mark.

13.2 The Race Committee will signal its intention to start another race by displaying the Second Substitute while boats are finishing.

14 TIME LIMITS AND TARGET TIMES

14.1 Time limit is 2 hours for each class.

14.2 Boats that have not finished and are still racing 30 minutes after the first boat finishes will be scored as 'Time Limit Expired' (TLE) and will be scored two points more than number of finishers, however no boat will receive a score worse than the number of points awarded a DNF. This changes rule 35 and Appendix A4.

15 PROTESTS AND REQUESTS FOR REDRESS

15.1 A boat intending to protest another boat must notify the race committee by hail (or VHF radio Channel 72) immediately after finishing or retiring.

15.2 Protest forms are available at the Race Committee boat “Mr. Roberts II” and at the Race Office, located at the Tea House at the Deltaville Maritime Museum. Protests and requests for redress or reopening shall be delivered to the Race Office within the appropriate time limit.

15.3 The protest time limit is 60 minutes after the arrival of the Race Committee signal boat at the dock. The same time limit applies to protests by the Race Committee and Protest Committee about incidents they observe in the racing area and to requests for redress. This changes rules 61.3 and 62.2. The Race Committee will post the end of the protest time limit on the Notice Board at the Race Office and on the Event website (www.yachtscoring.com).

15.4 Notices will be posted no later than 15 minutes after the protest time limit to inform competitors of hearings in which they are parties or named as witnesses. Hearings will be held in the protest room, located at the Tea House at the Deltaville Maritime Museum, beginning at the time posted.

Captain Sponsor

First Mate Sponsors



- 15.4** Each boat must check the Official Notice Board to determine if it is involved in a protest. A hearing may be held if a party or witness is not available.
- 15.5** If the RC posts a list of boats scored OCS or ZFP on the Notice Board before the Protest Time Limit, a request for redress based on the posted score shall be made no later than fifteen (15) minutes after the Protest Time Limit. This changes RRS 62.2.
- 15.6** Notices of protests by the race committee or protest committee will be posted to inform boats under rule 61.1(b).
- 15.7** Breaches of instructions 17, 18, and 19 will not be grounds for a protest by a boat. This changes rule 60.1(a). Penalties for these breaches may be less than disqualification if the protest committee so decides.

16 SCORING

- 16.1** The scoring system is the Low Point System of Appendix A. There will be no throw-outs.

17 SAFETY REGULATIONS

- 17.1** A boat that retires from a race or leaves the racing area prior to the end of racing shall notify the race committee as soon as practical. The race committee can be notified by contacting any race committee boat verbally, or by VHF channel 72.
- 17.2** All PHRF boats competing in the regatta must comply with all PHRF Equipment and Accommodations Standards. If not so specified, she shall also carry one USCG approved PFD, of the appropriate class, for each person on board.
- 17.3** The legal drinking age in Virginia is 21. Minors will not be served and proof of age will be required. Intoxication or discourteous behaviour will be grounds for expulsion from the events. Boat captains and owners will be responsible for the actions of their crew. **A BOAT IS SUBJECT TO IMMEDIATE DISQUALIFICATION BY THE PROTEST COMMITTEE IF ANY UNDER-AGE CREW IS FOUND TO BE ILLEGALLY CONSUMING ALCOHOL.**

18 RADIO COMMUNICATION

- 18.1** The Race Committee Boat will use VHF Channel 72 to communicate with boats on the East Course.

Captain Sponsor



First Mate Sponsors



- 18.2** The Race Committee will not respond to transmissions from competitors except to acknowledge retirements, protests, penalties reported or taken, or requests for emergency assistance.
- 18.3** Race Committee broadcasts are a courtesy only. Failure of the Race Committee to broadcast or a competitor to receive a broadcast from the Race Committee shall not be grounds for redress under Rule 62.1(a).
- 18.4** Except in an emergency, a boat shall neither make radio transmissions while racing nor receive radio communications not available to all boats. This restriction also applies to mobile telephones.

19 PRIZES

Prizes will be awarded to the boats placing first, second, and third in the regatta.

20 DISCLAIMER OF LIABILITY

Competitors participate in the regatta entirely at their own risk. See rule 4, Decision to Race. The organizing authority will not accept any liability for material damage or personal injury or death sustained in conjunction with or prior to, during, or after the regatta.

Captain Sponsor



First Mate Sponsors



Attachment 1 – Racing Areas



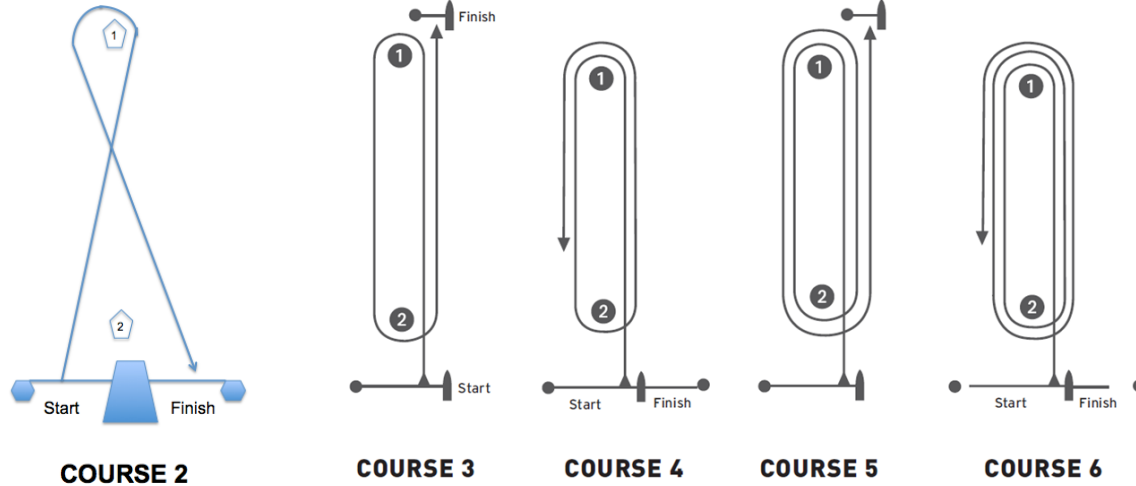
Captain Sponsor



First Mate Sponsors



Attachment 2 – Courses:



On ALL COURSES

Mark 1 includes a windward mark and an offset mark, both of which must be left to port. If the offset mark is not set, competitors shall commence the leeward leg after rounding the windward mark.

COURSE 2

“2” (two legs): This course is windward, leeward to finish. Finish is on the opposite side of the Signal Boat from the starting line. The marks shall be rounded in order of 1, finish. Mark 2, if in place, may be left on either hand on all legs.

COURSE 3

“3” (three legs): This course is windward, leeward, finish to windward. The marks shall be rounded in order of 1,2, finish. Mark 2 may be left on either hand on the first windward leg and Mark 1 may be left on either hand on the finishing leg.

COURSE 4

“4” (four legs): This course is a windward, leeward, twice around, finish to leeward. The marks will be rounded in the order of 1, 2, 1, finish. Mark 2 may be left on either hand on the first windward leg and on the finishing leg.

Captain Sponsor



First Mate Sponsors



COURSE 5

“5” (five legs): This course is a windward, leeward, twice around, finish to windward. The marks shall be rounded in the order of 1, 2, 1, 2, finish. Mark 2 may be left on either hand on the first windward leg and Mark 1 may be left on either hand on the finishing leg.

COURSE 6

“6” (six legs): This course is a windward, leeward, three times around, finish to leeward. The marks shall be rounded in the order of 1, 2, 1, 2, 1, finish. Mark 2 may be left on either hand on the first windward leg and on the finishing leg.

Captain Sponsor



First Mate Sponsors





18th Annual Southern Chesapeake Leukemia Cup Regatta July 8-10, 2015

The Leukemia & Lymphoma Society and Fishing Bay Yacht Club are co-organizing authorities for this regatta. Fishing Bay Yacht Club is the Host Club, and racing will be conducted in the Piankatank River and Chesapeake Bay at the mouth of the Piankatank River.

WEST COURSE GENERAL INFORMATION, FOR LEUKEMIA AND CRUISING CLASSES

- A. The 18th ANNUAL LEUKEMIA CUP REGATTA SOUTHERN CHESAPEAKE SAILING SERIES is sponsored by Fishing Bay Yacht Club, Stingray Harbour Yacht Club, and Hampton Yacht Club, and hosted by Deltaville Maritime Museum in Deltaville, VA. This regatta will consist of two or more races each day to be sailed by the Leukemia (Cruising) and Classic classes on the WEST course (see sailing instructions below) Other classes will race on other courses at the event (Sailing instructions distributed separately). The races and associated activities are to benefit The Leukemia & Lymphoma Society.
- B. Race headquarters, social events, and registration will be at Deltaville Maritime Museum, 287 Jackson Creek Rd, Deltaville, VA 23043. There will be registration, dinner, and Gala Auction beginning at 1800 Friday, and a brief skippers meeting at 1930 hours. Saturday evening will feature daily awards at 1745, dinner and social beginning at 1800. Overall series awards will be held after the races on Sunday at Deltaville Maritime Museum & Holly Point Natural Park.
- C. The legal drinking age in Virginia is 21. Minors will not be served and proof of age will be required. Intoxication or discourteous behavior will be grounds for expulsion from the events. Boat captains and owners will be responsible for the actions of their crew. **A BOAT IS SUBJECT TO IMMEDIATE DISQUALIFICATION BY THE PROTEST COMMITTEE IF ANY UNDER-AGE CREW IS FOUND TO BE ILLEGALLY CONSUMING ALCOHOL.**

SCHEDULE OF EVENTS

Friday, July 8

1800-2000

Late Registration, Dinner and Social at the Deltaville Maritime Museum. Dinner tickets available in advance with a limited number at the event

1930

Skippers' Meeting for All Classes

Saturday, July 11

1100

Warning Signal for first race; subsequent races to follow

1745-2200

Daily Awards at 1745 followed by Off the Water Contests, Dinner, Gala Auction and Social at Deltaville Maritime Museum

Sunday, July 12

1000

Warning Signal for first race; subsequent races to follow

1600 (Approx.) Awards Ceremony, Deltaville Maritime Museum

Captain Sponsor



First Mate Sponsors



WEST COURSE SAILING INSTRUCTIONS

WEST COURSE SAILING INSTRUCTIONS

1 RULES

The regatta will be governed by the *Racing Rules of Sailing* (RRS).

2 ENTRIES

2.1 Eligible boats may be entered by completing online registration at <http://www.leukemicup.org/va>. Late registration will be available Friday, July 8, and Saturday morning at Deltaville Maritime Museum.

2.2 Boats not having a current valid PHRF rating will be assigned a provisional rating which may not be appealed.

2.4 Boats will be sailed allowing only one (1) headsail downwind.

3 NOTICES TO COMPETITORS

3.1 Notices to competitors will be posted on the official notice board(s) located at the Deltaville Maritime Museum, and may also be available on the Yacht Scoring site (www.yachtscoring.com).

3.2 A competitors' (Skippers) meeting will be held at 1930 on Friday at Deltaville Maritime Museum.

4 CHANGES TO SAILING INSTRUCTIONS

4.1 Any change to the sailing instructions will be posted before 0800 on the day it will take effect, except that any change to the schedule of races will be posted by 2000 on the day before it will take effect.

4.2 The Race Committee may make changes to the sailing instructions on the water by displaying Code Flag "L" and announcing such changes on VHF channel 65.

5 SIGNALS MADE ASHORE

5.1 Signals made ashore will be displayed from the mast at the Deltaville Maritime Museum.

5.2 When flag AP is displayed ashore, '1 minute' is replaced with 'not less than 60

minutes' after flag AP is lowered ashore with one sound signal. This changes race signal AP.

5.3 When a change to the sailing instructions is posted, Code Flag "L" will be displayed at Maritime Museum.

6 SCHEDULE OF RACES

6.1 The scheduled time of the warning signal for the first race on Saturday is 1100.

6.2 The schedule time of the warning signal for the first race on Sunday is 1000.

6.3 Two or more races will be run each day (time and weather permitting).

6.4 On Sunday, no warning signal will be made after 1500.

7 CLASS FLAGS

7.1 Class divisions will be posted on the official notice board, with class flags as follows:

Cruising 1	White
Cruising 2	Blue
Classic	Green

7.2 The Leukemia Cup class flags for the Cruising and Classic classes will be colored ribbons, and must be flown from the backstay of the boat while racing.

7.3 The class flags (ribbons) will be in the information package given out at registration.

7.4 Class Flags used to signal the start of each class shall be a flag of the same color as the issued class (ribbon) flag.

8 RACING AREAS

Racing will be conducted at the mouth of the Piankatank River approximately 1 mile northeast of buoy "5", as shown on Attachment 1.

9 OFFICIAL BOATS

Captain Sponsor

First Mate Sponsors



WEST COURSE SAILING INSTRUCTIONS

- The Race Committee Boat will be anchored at the designated Start location shown in Attachment 1.
- 10 MARKS
- 10.1 Start and finish will be between the Committee Boat and the adjacent mark.
- 10.2 The Committee Boat will be positioned adjacent to the start/finish mark located at 37°32.345' Lat and 76°17.677' Long.
- 10.3 The rounding marks will be inflatable cylinders or tetrahedrons positioned as designated in this Section 10. Courses and distances are approximate, as follows.
- 10.4 The First Mark, at the end of Leg 1, will be positioned at 37°31.800' Lat and 76°16.700' Long. The course from the start to the first mark will be 136°M. The length of Leg 1 is .94 Nm.
- 10.5 The Second Mark, at the end of Leg 2, will be positioned at 37°32.705' Lat and 76°16.559' Long. The course from the first to the second mark will be 18°M. The length of Leg 2 is .91 Nm.
- 10.6 The course to the finish mark from the Second Mark, Leg 3, will be 259°M. The length of Leg 3 is .95 Nm. Competitors shall round the Third (finish) mark leaving it to port, crossing the finish line as they round.
- 11 CHECK IN
Each boat shall sail by the race committee signal boat, hail her sail number and be acknowledged by the race committee. This shall be done before a boat starts the first race in which she competes each day.
- 12 THE START
- 12.1 Races will be started by using rule 26. Please refer to Attachment 2 for Rule 26 details.
- 12.2 The absence of a sound signal during the starting sequence shall be disregarded – visual signals prevail.
- 12.3 The starting line will be between a staff or halyard displaying an orange flag on the race committee signal boat and the course side of the pin end mark. The pin end mark will be an inflatable buoy.
- 12.4 The race committee intends to announce boats identified as OCS on VHF radio. West Course will broadcast on VHF channel 65. Failure to transmit information, receive such notification, or the order in which recalled boats are broadcast will not be grounds for redress. This changes RRS 62.
- 12.5 Boats whose warning signal has not been made shall avoid the starting area.
- 12.6 A boat starting later than 10 minutes after her starting signal will be scored Did Not Start. This changes rule A4
- 12.7 Additional races each day (time and weather permitting) shall be signaled from the committee boat by displaying the Second Substitute while boats are finishing the first race. The Warning signal will be given as soon as possible after the end of the first race. A series of horn blasts will be used to indicate that the Warning signal of the additional race(s) is imminent
- 13 THE FINISH
- 13.1 The finishing line will be between a staff or halyard displaying an orange flag on the race committee finish boat and an inflatable mark.
- 13.2 Each boat will receive a sound signal when the boat finishes. After finishing, each boat must keep clear of the racing area, including the finishing area.
- 14 SHORTEN COURSE
The race committee may shorten the course at any mark by displaying the code flag "S"

Captain Sponsor



First Mate Sponsors



WEST COURSE SAILING INSTRUCTIONS

when anchored. The finish line will be between the mark and a staff or halyard displaying code flag "S" on the race committee finish boat.

15 TIME LIMITS

15.1 Time limit is 2 hours for each class

15.2 Boats that have not finished and are still racing three hours after their start will be scored as 'Time Limit Expired' (TLE) and will be scored one more point than number of finishers, however no boat will receive a score worse than the number of points awarded a DNF. This changes rule 35 and Appendix A.

15.3 Boats that have not finished and are still racing but are substantially delaying the start of the next race of the day may be requested by the Race Committee to return to the starting area and accept a score of 'Time Limit Expired' (TLE). A boat complying with this request from the Race Committee shall be scored one more point than number of finishers, however no boat will receive a score worse than the number of points awarded a DNF. This changes rule 35 and Appendix A.

15.4 The race committee may abandon a race. Verbal notice of abandonment will be broadcast over VHF Channel 65. The race committee will also display the code flag "N" and possibly other signals as described in Rule "Race Signals".

16 PROTESTS AND REQUESTS FOR REDRESS

16.1 A boat intending to protest another boat must notify the race committee by hail (or VHF radio Channel 65) immediately after finishing or retiring.

16.2 Protest forms are available at the Race Committee boat and at the Race Office,

located at the Tea House at the Deltaville Maritime Museum. Protests and requests for redress or reopening shall be delivered to the Race Office within the appropriate time limit.

16.3 The protest time limit is 60 minutes after the arrival of the race committee signal boat at the dock. The same time limit applies to protests by the race committee and protest committee about incidents they observe in the racing area and to requests for redress. This changes rules 61.3 and 62.2.

16.4 If the RC posts a list of boats scored OCS or ZFP on the Notice Board before the Protest Time Limit, a request for redress based on the posted score shall be made no later than fifteen (15) minutes after the Protest Time Limit. This changes RRS 62.2.

16.5 The race committee will post the end of the protest time limit on the notice board.

16.6 Notices will be posted on the notice board within 15 minutes of the protest time limit to inform competitors of hearings in which they are parties or named as witnesses. Hearings will be held in the protest room, located at the Tea House at the Deltaville Maritime Museum, beginning at the time posted.

16.7 Each boat must check the Official Notice Board to determine if it is involved in a protest. A hearing may be held if a party or witness is not available.

16.8 Notices of protests by the race committee or protest committee will be posted to inform boats under rule 61.1(b).

17 SCORING

Scoring will be in accordance with the Low Point System of Appendix A. There will be no throw-outs.

18 SAFETY REGULATIONS

Captain Sponsor



First Mate Sponsors

WEST COURSE SAILING INSTRUCTIONS

18.1 A boat that retires from a race or leaves the racing area prior to the end of racing shall notify the race committee as soon as practical. The race committee can be notified by contacting any race committee boat verbally, or by VHF channel 65

18.2 A boat shall carry all equipment required by her class rules, and the U. S Coast Guard. If not so specified, she shall also carry one USCG approved PFD, of the appropriate class, for each person on board.

19 TRASH DISPOSAL

A competitor shall not intentionally put trash in the water.

20 RADIO COMMUNICATION

20.1 Except in emergency, a boat shall neither make radio transmissions while racing nor receive radio communications not available to all boats. This restriction also applies to mobile telephones.

20.2 Race Committee broadcasts are a courtesy only. Failure of the Race Committee to broadcast or a competitor to receive a broadcast from the Race Committee shall not be grounds for redress under Rule 62.1(a).

21 PRIZES

Prizes will be awarded to the boats placing first, second, and third in the regatta.

22 DISCLAIMER OF LIABILITY

Competitors participate in the regatta entirely at their own risk. See rule 4, Decision to Race. The organizing authority will not accept any liability for material damage or personal injury or death sustained in conjunction with or prior to, during, or after the regatta.

Captain Sponsor

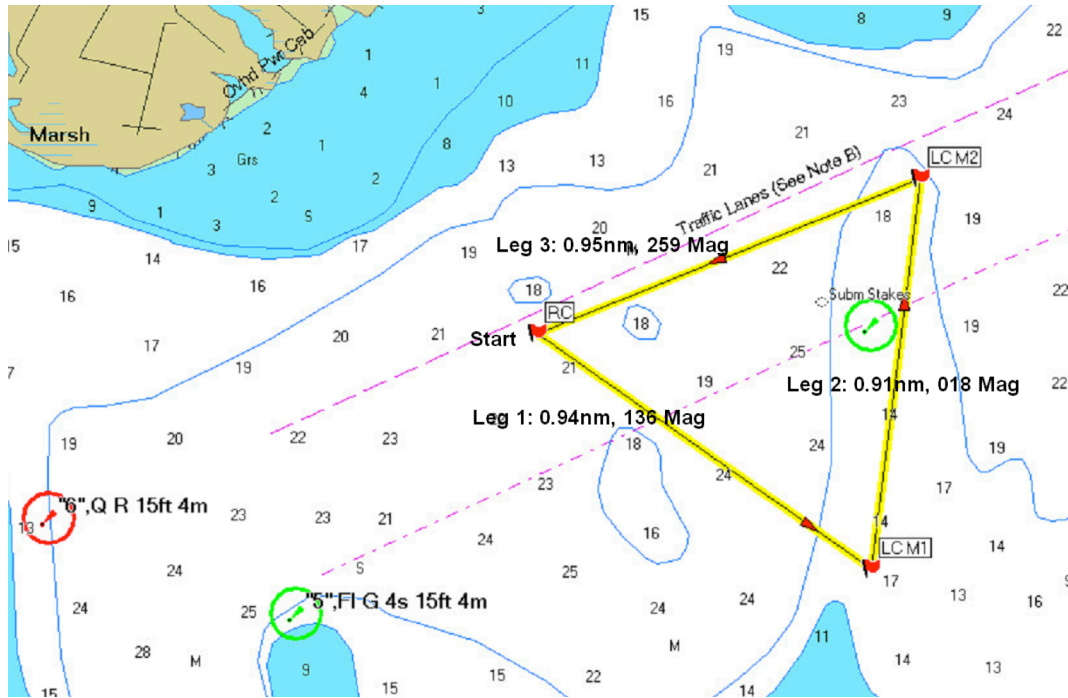


First Mate Sponsors



WEST COURSE SAILING INSTRUCTIONS

ATTACHMENT 1 – RACING AREA



ATTACHMENT 2 - Reprint of Rule 26

RRS Rule 26 STARTING RACES

Races shall be started by using the following signals. Times shall be taken from the visual signals; the absence of a sound signal shall be disregarded.

Signal	Flag and sound	Minutes before Starting signal
Warning	Class flag; 1 sound	5
Preparatory	P flag; 1 sound	4
One-minute	Preparatory flag removed; 1 long sound	1
Starting	Class flag removed; 1 sound	0

The warning signal for each succeeding class shall be made with or after the starting signal of the preceding class.

Version 1, June 26, 2016

Captain Sponsor

First Mate Sponsors





18th Annual Southern Chesapeake Leukemia Cup Regatta July 8-10, 2016

The Leukemia & Lymphoma Society and Fishing Bay Yacht Club are co-organizing authorities for this regatta. Fishing Bay Yacht Club is the Host Club, and racing will be conducted in the Piankatank River and Chesapeake Bay at the mouth of the Piankatank River.

FISHING BAY COURSE SAILING INSTRUCTIONS

1 RULES

- 1.1** The regatta will be governed by the rules as defined in *The Racing Rules of Sailing*.

2 NOTICES TO COMPETITORS

Notices to competitors will be posted on the official notice board located inside the FBYC Main Clubhouse first floor screen porch, and may also be available at the Deltaville Maritime Museum and on the Yacht Scoring site (www.yachtscoring.com).

3 CHANGES TO SAILING INSTRUCTIONS

Any change to the sailing instructions will be posted before 0800 on the day it will take effect, except that any change to the schedule of races will be posted by 2000 on the day before it will take effect.

4 SIGNALS MADE ASHORE

- 4.1** Signals made ashore will be displayed on the flagpole on the FBYC Fishing Bay Dock.
- 4.2** When flag AP is displayed ashore, '1 minute' is replaced with 'not less than 45 minutes' after flag AP is lowered ashore with one sound signal. This changes race signal AP.
- 4.3** When a change to the sailing instructions is posted, Code Flag "L" will be displayed on the FBYC Dock.
- 4.4** The display of code flag "B" made ashore means that the Protest Time has begun.
- 4.5** When flag 'Y' is displayed ashore, Rule 40 applies at all times while afloat. This changes the Part 4 preamble.

Captain Sponsor



First Mate Sponsors



FISHING BAY COURSE SAILING INSTRUCTIONS

5 SCHEDULE OF RACES

- 5.1** The scheduled time of the warning signal for the first race on Saturday is 1100.
- 5.2** The schedule time of the warning signal for the first race on Sunday is 1000.
- 5.3** On Sunday, no warning signal will be made after 1500.

6 CLASS FLAGS

All Classes shall race together and be scored using the Portsmouth Handicap System. The Class Flag shall be a white flag.

7 RACING AREAS

Attachment 1 shows the location of racing areas.

8 THE COURSES

- 8.1** The diagrams in Attachment 2 show the courses, including the approximate angles between legs, the order in which marks are to be passed, and the side on which each mark is to be left.
- 8.2** The course for each class will be designated by displaying letter(s) on the Race Committee Signal Boat. A number following the course designation will indicate the number of legs. (Other examples include: "W2" is windward/leeward, "W4" is windward/ leeward/ windward/ leeward, and "H5" is windward/ leeward/ windward/ leeward/ windward.)
- 8.3** The standard "W" course configuration includes a leeward mark positioned to windward of the start/finish line. The leeward mark is not a mark of the course during the first leg of the course or, in the event of a downwind finish, during the last leg of the course. In the absence of this leeward mark, the boats shall round the starting line mark (pin).

9 MARKS

- 9.1** The rounding marks will be inflatable marks.
- 9.2** The starting and finishing marks may be inflatable cylindrical or tetrahedron shaped marks.

10 CHECK IN

- 10.1** Each boat is requested, as a courtesy, to check-in at the Race Committee signal boat by hailing her sail number and class and being acknowledged by the Race Committee before the warning signal for the first race of the day. A boat may not protest a breach of this instruction. This changes Rule 60.1.

Captain Sponsor



First Mate Sponsors



FISHING BAY COURSE SAILING INSTRUCTIONS

11 THE START

- 11.1 Races will be started by using Rule 26 with the warning signal made five (5) minutes before the starting signal.
- 11.2 The starting line will be between the staff from which a yellow or orange flag is displayed on the RC signal boat and the starting line mark (pin).
- 11.3 A boat starting later than 5 minutes after her starting signal will be scored Did Not Start without a hearing. This changes rule A4 and A5.
- 11.4 The Race Committee will attempt to notify OCS boats. Failure to hail, the order of the hail, the hail of some but not all, or the untimely hail of OCS boats will not be grounds for redress. This changes rule 62.1 (a).
- 11.6 After a long postponement, to alert boats that a race or sequence of races will begin soon, multiple short sounds may be made before a warning signal is displayed. This is not a timed sound signal.

12 CHANGE OF THE NEXT LEG OF THE COURSE

- 12.1 To change the next leg of the course, the race committee will lay a new yellow mark (or move the finishing line) and remove the original mark as soon as practicable. When in a subsequent change a new mark is replaced, it will be replaced by an original mark.

13 THE FINISH

- 13.1 The finishing line will be between a yellow or orange flag (or staff with code flag "S", if the course has been shortened) on a committee boat and the designated finishing mark.
- 13.3 In a race that has not been shortened, the finish line shall be crossed from the direction of the last mark preceding the finishing mark, regardless of the position of the committee boat.
- 13.2 If the Race Committee intends to conduct another race, the code flag "Second Substitute" will be displayed on the Race Committee finish boat while boats are finishing.
- 13.3 A boat sailing the course whose finish position cannot be changed no matter how she finishes, may be requested by the Race Committee to immediately return to the starting area. Such a boat will be scored as though she had completed the race. This changes Rules 28.1, 35, A4.1 and A4.2.

14 TIME LIMITS AND TARGET TIMES

- 14.1 Time limit will be 80 minutes for each class.
- 14.2 Boats failing to finish within thirty (30) minutes after the first boat sails the course and finishes will be scored "Did Not Finish" without a hearing. This changes Rules 35, A4 and A5.

Captain Sponsor



First Mate Sponsors



FISHING BAY COURSE SAILING INSTRUCTIONS

15 PROTESTS AND REQUESTS FOR REDRESS

- 15.1** A boat intending to protest another boat must so notify the Race Committee by hail immediately after finishing or retiring. This notification must include the boat name and/or sail number of the boat being protested and must be acknowledged by the Race Committee. This changes Rule 61.1(a).
- 15.2** Protest forms are available at the Race Committee boat and at the Race Office, located at the Tea House at the Deltaville Maritime Museum. Protests and requests for redress or reopening shall be delivered to the Race Office within the appropriate time limit.
- 15.3** The protest time limit is 60 minutes after the arrival of the Race Committee signal boat at the dock. The same time limit applies to protests by the Race Committee and Protest Committee about incidents they observe in the racing area and to requests for redress. This changes rules 61.3 and 62.2. The Race Committee will post the end of the protest time limit on the Notice Board at the Race Office at the Deltaville Maritime Museum.
- 15.4** If the Race Committee posts a list of boats scored OCS, ZFP, or BFD on the Official Notice Board before expiration of the protest time limit, the time for filing a request for redress based on such a score shall be made no later than 15 minutes after the protest time limit. This changes Rule 62.2.
- 15.5** Notices will be posted no later than 15 minutes after the protest time limit to inform competitors of hearings in which they are parties or named as witnesses. Hearings will be held in the protest room, located at the Tea House at the Deltaville Maritime Museum, beginning at the time posted.
- 15.4** Each boat must check the Official Notice Board to determine if it is involved in a protest. A hearing may be held if a party or witness is not available.
- 15.5** Notices of protests by the race committee or protest committee will be posted to inform boats under rule 61.1(b).
- 15.6** Breaches of instructions 17, 18, and 19 will not be grounds for a protest by a boat. This changes rule 60.1(a). Penalties for these breaches may be less than disqualification if the protest committee so decides.

16 SCORING

- 16.1** The scoring system is the Low Point System of Appendix A. There will be no throw-outs.

17 SAFETY REGULATIONS

- 17.1** A boat that retires from a race shall notify the race committee as soon as possible. Failure to notify as soon as possible will result in disqualification for the last race the boat started prior to retiring.

Captain Sponsor



First Mate Sponsors



FISHING BAY COURSE SAILING INSTRUCTIONS

- 17.2** A boat shall carry all equipment required by her class rules. If not so specified, she shall also carry one USCG-approved PFD for each person on board.
- 17.3** The legal drinking age in Virginia is 21. Minors will not be served and proof of age will be required. Intoxication or discourteous behaviour will be grounds for expulsion from the events. Boat captains and owners will be responsible for the actions of their crew. **A BOAT IS SUBJECT TO IMMEDIATE DISQUALIFICATION BY THE PROTEST COMMITTEE IF ANY UNDER-AGE CREW IS FOUND TO BE ILLEGALLY CONSUMING ALCOHOL.**
- 18 TRASH DISPOSAL**
A competitor shall not intentionally put trash in the water. Trash may be placed aboard support and race committee boats.
- 19 RADIO COMMUNICATION**
19.1 Except in an emergency, a boat shall neither make radio transmissions while racing nor receive radio communications not available to all boats. This restriction also applies to mobile telephones.
- 20 PRIZES**
Prizes will be awarded to the boats placing first, second, and third in the regatta.
- 21 DISCLAIMER OF LIABILITY**
Competitors participate in the regatta entirely at their own risk. See rule 4, Decision to Race. The organizing authority will not accept any liability for material damage or personal injury or death sustained in conjunction with or prior to, during, or after the regatta.

Captain Sponsor



First Mate Sponsors



FISHING BAY COURSE SAILING INSTRUCTIONS

Attachment 1 – Racing Areas



Captain Sponsor

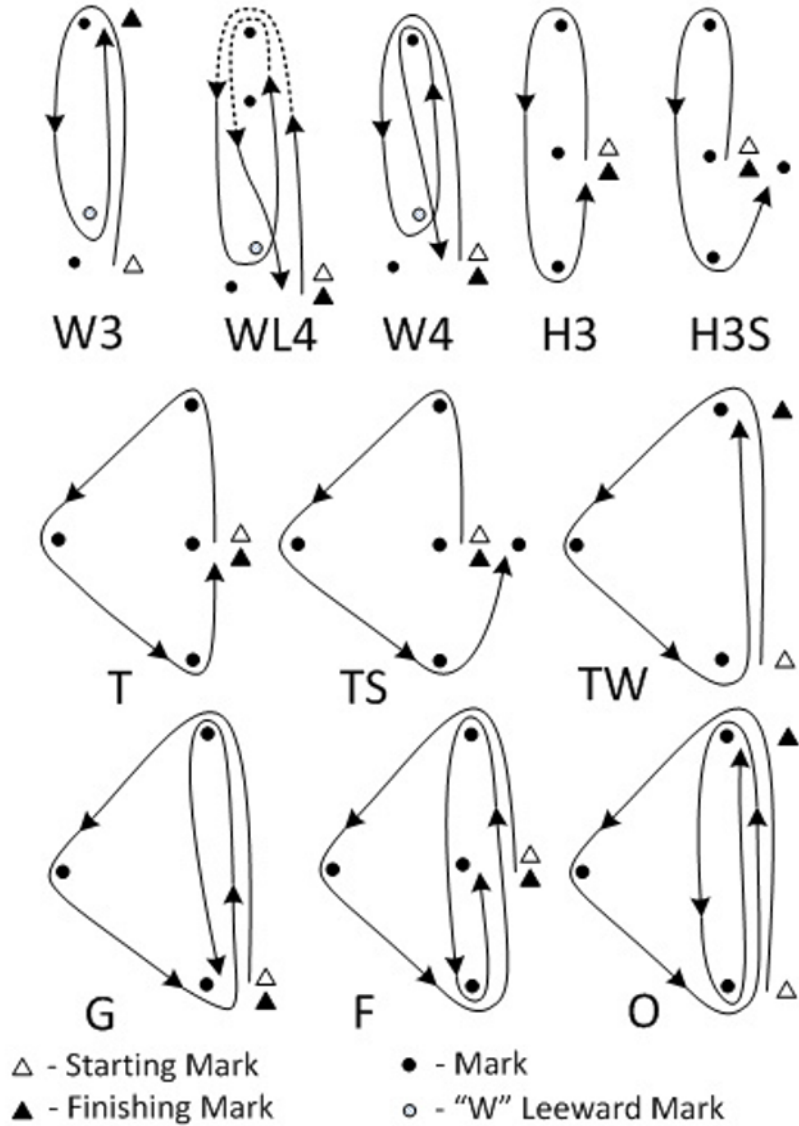


First Mate Sponsors



FISHING BAY COURSE SAILING INSTRUCTIONS

Attachment 2 – Courses:



A numeral indicates the number of LEGS if following a course designation "W", "WL", "H", or "T".

Captain Sponsor



First Mate Sponsors

